

# THE VOICE

February 2025



**A COMMUNITY MAGAZINE FOR BOROUGH GREEN  
PRODUCED BY THE CHURCH OF THE GOOD SHEPHERD.  
DELIVERED FREE TO ALL HOMES AND BUSINESSES IN THE VILLAGE.  
WITH THANKS TO ALL COMMUNITY SUPPORT (see page 9).**



Central Heating & Boiler Engineers

Gas \* Oil \* LPG



*"you may not need a local & reliable boiler engineer today, just remember our name for the day you do"*



Service Installation Repair



01732 885882

www.samsian.co.uk

### G R SERVICING LTD

Now at Unit 16  
Orchard Place Business Centre  
Seven Mile Lane  
Wrotham Heath



Servicing and repairing your vehicles.

MOTs can also be arranged.

PLEASE CALL  
01732 882725 as before.

### BOROUGH GREEN OPTICIANS

EST 1972  
OPTOMETRISTS AND  
CONTACT LENS CONSULTANTS

Monday, Tuesday, Thursday, Friday  
9.00 - 5.30  
Wednesday Closed  
Saturday  
9.00 - 1.00

- Full eye examination
- Cataract referrals
- Glaucoma check
- Free trial on most types of contact lenses



25, High Street  
Borough Green  
Kent

01732 884558

Email [bgopticians@outlook.com](mailto:bgopticians@outlook.com)

# Editorial from the Church of the Good Shepherd

February 2025

## Again and again and again....

In parts of North America, Groundhog Day is celebrated on 2<sup>nd</sup> February. Tradition has it that if the groundhog can see its shadow there will be six more weeks of winter, but no shadow means the early arrival of spring.

Groundhog Day is also a 1993 film starring Bill Murray. He plays an obnoxious TV weatherman who, after reporting on the Groundhog Day festivities, gets stuck in a time loop, repeating the same day, 2<sup>nd</sup> February, again and again and again. Initially, once he gets over his confusions, he uses this eternity for his own selfish pleasure. He steals, drinks, overeats and tricks people into relationships, apparently without any consequences. However, this leaves him feeling empty, lonely and depressed. Eventually he attempts suicide, again and again and again.

It is not until he starts living his eternal life for other people instead of for himself that he finds fulfilment. He helps old ladies with a flat tyre, saves a man from choking and steers a young couple towards a happy marriage. In the end he finds love himself.

The film raises the question of what would we do with eternity? Within the church ideas of eternity are often associated with heaven and hell. And the theme of Groundhog Day reminded me of the allegorical Tale of the Long Spoons.

*One day a man said to God, "God, I would like to know what Heaven and Hell are like."*

*God showed the man two doors. Inside the first one, in the middle of the room, was a large round table with a large pot of vegetable stew. It smelled delicious and made the man's mouth water, but the people sitting around the table were thin and sickly. They appeared to be famished. They were holding spoons with very long handles and each found it possible to reach into the pot of stew and take a spoonful, but because the handle was longer than their arms, they could not get the spoons back into their mouths.*

*The man shuddered at the sight of their misery and suffering. God said, "You have seen Hell."*

*Behind the second door, the room appeared exactly the same. There was the large round table with the large pot of wonderful vegetable stew that made the man's mouth water. The people had the same long-handled spoons, but they were well nourished and plump, laughing and talking.*

*The man said, "I don't understand."*

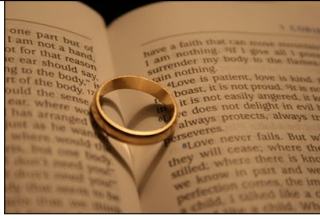
*God smiled. "It is simple" he said, "Love only requires one skill. These people learned early on to share and feed one another. While the greedy only think of themselves...."*

As with all allegories, this isn't a real picture of heaven, or indeed hell, but as with Groundhog Day it does raise the question – how do we want to spend eternity.

When Jesus came, his selfless and self-sacrificing love opened the door to eternity. As he proclaimed, "The kingdom of heaven has come near" and Jesus wanted us to live the resurrected eternal life - the life of heaven – now.

So perhaps this Groundhog Day, instead of concerning ourselves over the length of winter, we might ask – how do I want to spend eternity - and then start living it today.

God bless  
Rev. Chris



A Valentine's Day proposal?

Recently engaged? Planning a wedding?

At the Church of the Good Shepherd, we would be delighted to help make your special day special.

Find out more about Church of England weddings at:

[yourchurchwedding.org](http://yourchurchwedding.org)

And contact us for more information:

[vicar.cogs@gmail.com](mailto:vicar.cogs@gmail.com)

# QUIZ NIGHT

**Saturday 1 February**

**Food Served 7pm**

**Tickets £15.00      Supper Included**

**Booking Essential**

**Licensed Bar**

For booking and dietary requirements  
please contact - **Julie 885437**

**Church of the Good Shepherd,  
Quarry Hill Road**

# DISCOVER YOUR COMMUNITY

Come join us for a free, fun community get-together!

It will be a chance to meet local people and learn about the wonderful organisations and businesses that make our village special.

We can't wait to see you there!



**THURSDAY**  
**30.01.2025**

Drop in between  
19.00 - 20.30  
At the Church of the  
Good Shepherd  
Quarry Hill Road

**J & F**  
**ACCOUNTANCY LTD**

Chartered Accountants  
Self Assessment Tax Returns  
Self-Employed Accounts  
Limited Company Accounts  
Payroll & CIS

**Tel: 01732 885444**

1 Station Court, Station Approach  
Borough Green, Kent TN15 8AD  
Email: [info@jandfaccountancy.co.uk](mailto:info@jandfaccountancy.co.uk)  
Web: [www.jandfaccountancy.co.uk](http://www.jandfaccountancy.co.uk)



**VEHICLE SERVICING  
AND REPAIRS**

London House Works,  
Station Road,  
Borough Green

[www.gsmechengineers.co.uk](http://www.gsmechengineers.co.uk)

email:  
[info@gsmechengineers.co.uk](mailto:info@gsmechengineers.co.uk)

**Tel: 01732 885314**

**John Ballantyne**  
**Handyman**

All DIY work for reasonable rates

Painting and Decorating,  
Kitchen Fitting,  
Decking, Fencing,  
Sheds and all Carpentry work,  
Flat pack assembly,  
Jet Washing.

General property maintenance  
No job too small

**Mobile: 07890 034846**



**Jason Langstaff**  
**Electrician**

- Design and Installation
- Fuse Board Upgrades
- Security Lighting
- Full or Part Rewires
- New Builds and Extensions
- Additional Sockets & Lighting Points
- Garden Power & Lighting
- System Upgrades
- Fault Finding
- CCTV
- PAT Testing



**Professional - Reliable - Courteous - Insured**  
All Work Completed to BS7671

**T: 01959 525 136** Sevenoaks  
**M: 07817 733 257** based  
**E: [jmllimited@aol.com](mailto:jmllimited@aol.com)**

## Notes from Borough Green Parish Council



The Council met on Mondays **2 December 2024** and **6 January 2025** at the Bowls Club and wish everyone a Happy New Year.

ESTABLISHED  
APRIL 1934

- **4X4 SANTA.** We give our thanks to Cllr Sue Butterfill for again arranging **South East 4x4 Response** Santa visit to Platt and Borough Green. By putting up advance notices at the stopping points and sending a 4x4 advance vehicle, there was a much larger turnout this year, so much so that Santa had to dispatch elves to Nisa Stores for more supplies.
- **The Christmas Lights** were again a huge success, and our grateful thanks to the volunteers who give up so much time throughout the year to ensure that everything goes to plan. It was a joy to see kids' faces light up as Santa was brought through the High St to the stage in a Morgan car driven by his elves. There has been concerns that some of the funding from TMBC may dry up as Government implements even more cuts on local authorities and the Parish Council have advanced plans in place to ensure this important village tradition carries on fully funded into the future.
- **Mrs Gladys Banks**, our 108 year old "Queen of Borough Green", was toasted by a happy crowd during the Christmas Festival and later appeared on TV in fine fettle singing her favourite Abba song.
- **MOTO Truckstop.** Thanks to the hard work by Cllr Pete Gillin of Wrotham Parish Council, the Parish Alliance planning team will have a strong case to put to the Inspector on 9 & 10 January.
- **Groundsman.** Our Barry is retiring this summer and, after several months advertising, we held an interview and have appointed a new groundsman starting 1 April. He will work alongside Barry until July and receive training where necessary.
- **Recreation Ground Pavilion.** Cllr Sam Thrush reported on some exploratory excavation works to the rear of the Pavilion to establish whether it will be possible to damp proof the walls from the outside which will be better than trying to manage the damp internally. He has also received quotes to re-tile the whole roof.
- **Criminal Damage** has seen a marked increase prior to Christmas, largely involving catapults or air-guns, smashing windows, cars and streetlights. The most important first step is to report it to the Police on 101 or online and obtain an incident number (see page 27). Cllr Guy Heselden has volunteered to work with the Clerk in a local crime liaison initiative with a view to building a comprehensive list of crimes that can be used as intelligence by the Police. Report every instance of crime but also email the details of that crime (including incident number, street, date and time, damage and any other notes like registration numbers) to [clerk@boroughgreen.gov.uk](mailto:clerk@boroughgreen.gov.uk) or [Guy.Heselden@boroughgreen.gov.uk](mailto:Guy.Heselden@boroughgreen.gov.uk).
- **Devolution** has triggered much urgent discussion and the County and Borough Councils have no real option but to get heavily involved. If we do not take this up, it will be "done to us" anyway, so the best bet is to be at the front of the queue. Our personal view is that the Government has

(Continued on page 11)

# The Birkbeck Chiropody & Podiatry Practice

Health Professions Council (HPC) Registered Podiatrists

Open Monday to Saturday  
Day and Evening Appointments  
Easy Car Parking

**Telephone: 01732 883271**



Woodlands, 172 Maidstone Road, Borough Green, Sevenoaks TN15 8JD  
T | 01732 883271 W | birkbeckpodiatry.com

## Sevenoaks Tree Care

Robert Hill  
07598870177

[sevenoakstreecare@gmail.com](mailto:sevenoakstreecare@gmail.com)

All aspects of tree surgery covering Sevenoaks and surrounding areas.

- Tree Removal.
- Tree Reduction.
- Veteran Tree Care.
- Dead Wooding.
- Site Clearance.
- Hedge Trimming.
- Shrub Pruning.
- Fruit Tree Pruning.
- Stump Grinding.
- Emergency Calls 24/7.
- Commercial and Domestic Work.

All our work is professionally undertaken at competitive rates.  
Fully insured and nptc qualified with over 15 years' experience.  
Free quotes & advice given.

[www.sevenoakstreecare.com](http://www.sevenoakstreecare.com)



## A PALMER COMPLETE ELECTRICAL SERVICES

**01732 886 939 07774 201 154**

ALL ELECTRICAL WORK  
LARGE OR SMALL



Registered  
Competent  
Person  
Electrical

ELECSA

FULL REWIRES, PARTIAL  
REWIRES, FUSEBOARDS,  
TEST CERTIFICATES,  
SOCKETS, LIGHTING.  
DOMESTIC COMMERCIAL  
LOCAL AUTHORITY  
RELIABLE FRIENDLY SERVICE.

## PORTLAND BENTLEY

*Painting & Decorating*  
*Contact Paul*

*email: [portlandbentley1989@gmail.com](mailto:portlandbentley1989@gmail.com)*

*07939 401467*

*01732 886801*



## MURIEL RURAL - THE ONLINE ARCHIVE

Readers of the Voice through the period from 2002 to 2016 will remember the regular contributions by "Muriel Rural". Two years ago came the sad news that the author of those contributions had died and I felt able to reveal who it was - Derek Freeman of Black Horse Mews.



Whilst there will no doubt have been mixed reactions to his contributions, I have been asked by some who enjoyed them if they could be made available online. I have scanned all those that I had available in our printed collection (digital versions no longer accessible) and Mike Taylor has kindly put the results on the Parish Council website along with some short stories that Derek had given him directly.

We hope that this archive will prompt some happy memories.

Margaret Jeffery

---

## Advertising

Any commercial bodies or people offering services who wish to advertise should contact **Chris Atkins** email [chris.atkins1952@gmail.com](mailto:chris.atkins1952@gmail.com) or phone **01732 366615** about rates and availability of spaces.

If you have something you want to sell, a caravan or cottage you want to let for holidays etc then contact Margaret Jeffery. The cost of such personal notices are just £2 per issue.

The views expressed in articles are not necessarily those of the Editorial Team. The Editorial Team cannot accept responsibility for wrong information received, or mistakes that occur in publication. The Editorial Team cannot accept responsibility for any delay in distribution. Publication of advertisements does not imply any form of recommendation. All articles in this magazine are covered by copyright and permission must be obtained before reproducing them in any format.

The total print run of the magazine is 2000 copies and it is also available to read on the COGS, BG Community and Parish Council websites.

## Thanks

Thank you to the Borough Green Parish Council for their generous grant and to all our advertisers for their financial support which makes the production of this magazine possible. Also thank you to all our distributors who get the Voice to every house in the village.

## Articles for the next magazine

The Voice is your community magazine and it relies on the people of Borough Green to make it as interesting as possible. Organisations, clubs and individuals are welcome to submit articles on their activities and subjects likely to be of interest to the village.

The deadline for articles for the next magazine will be **Tuesday 11 February** and these should be sent to the address below. The next magazine will cover **March** so if you have any events planned for that month and you would like them to appear in the diary section please send to :-

[m-jeffery@talktalk.net](mailto:m-jeffery@talktalk.net)

**01732 883978**

Margaret Jeffery  
7 Lendon Road  
Borough Green  
TN15 8SE

## WROTHAM COMPUTER CARE

Computer help  
at your Home or Office

### PCs and Apple Macs

We are a local company providing an affordable service to local families, professionals, businesses and schools.

For more details please contact us:

**01732 780176 or 07795 552440**

[mwhite@wrothamcomputercare.com](mailto:mwhite@wrothamcomputercare.com)

[www.wrothamcomputercare.com](http://www.wrothamcomputercare.com)

## J. Lawrenson

### Tree and Fencing Specialist

- Hedge cutting, reduction and removal
  - Tree pruning, felling and surgery
  - Stump and garden clearance
- All types of fencing supplied and erected, including panel and close boarded

Fully Insured  
All waste and cuttings recycled

Please call James on  
07759 137817  
01732 849295

Or email  
[j.lawrenson@hotmail.com](mailto:j.lawrenson@hotmail.com)



### Professional Domestic Cleaning Services

Are you a busy mum?  
Working long hours?  
Just need extra help?

Give us a call for reliable DBS checked staff and fully insured service!

07545 455742  
[sophie@capablecleaners.co.uk](mailto:sophie@capablecleaners.co.uk)  
[www.capablecleaners.co.uk](http://www.capablecleaners.co.uk)



*Privately owned local construction business with 25 years of industry experience with an unwavering commitment to our core values of collaboration, workmanship and integrity*

- **Construction** - renovations, small conversions & extensions, registered installers of RubberBond flat roofing
- **Groundworks** - site preparation, block & beam, foundations, deep drainage & services, finishing surfaces
- **Maintenance & repairs** - all internal and external aspects of building maintenance
- **Landscaping** - hard landscaping including retaining walls

Get in touch to discuss your project

M: 07 733 697 877

Ph: 01732647014

E: [info@muncalgroup.co.uk](mailto:info@muncalgroup.co.uk)

W: [www.muncalgroup.co.uk](http://www.muncalgroup.co.uk)



(Continued from page 7)

enough to do trying to get the economy back on track, without wasting time and vast sums of money "re-arranging the deckchairs".

- **30mph stickers** for our wheelie bins proved very successful, and the Parish Council will shortly be ordering a new supply - contact the Clerk or your nearest Parish Councillor.
- The Chairman and Clerk can still be contacted on the email addresses and numbers below, and in person meetings can still be arranged.

**The next Parish Council meeting** will be held at **7.30pm** on **Monday 3rd February 2025 at the Bowls Club**. The agenda will include a period for public contributions and questions. Parking at the Bowls Club is via Drylands Road, (but take a torch), or pedestrian access via Harrison Rd Rec entrance.

### Council Contacts

Chairman [mike.taylor@boroughgreen.gov.uk](mailto:mike.taylor@boroughgreen.gov.uk) **01732 882880**

Clerk [clerk@boroughgreen.gov.uk](mailto:clerk@boroughgreen.gov.uk) **07568 536405**

**Full minutes** are posted at [MINUTES](#) | [mysite \(boroughgreen.gov.uk\)](#)



## PARISH ALLIANCE SHOPPER BUSES

### MONDAYS ROUTE 70

9.36 Wrotham Square, 9.41 Borough Green Station, 9.47 Platt, Wrotham Heath, Offham, West Malling, Leybourne Chase, East Malling to Larkfield and Maidstone. Returning from Maidstone Chequers Bus Station at 1.00.

### THURSDAYS ROUTE 70

11.25 Wrotham Square, 11.30 Borough Green Station, 11.36 Platt, Wrotham Heath, Offham, West Malling, Leybourne Chase, Tesco Lunsford Park. Returning from Tesco 2.10.

### FRIDAYS ROUTE 58

9.30 Wrotham Square, 9.35 Borough Green Station, 9.38 Platt, Wrotham Heath, Addington Green, Trottiscliffe, Ryarsh, Birling, Leybourne, West Malling, East Malling to Larkfield and Maidstone. Returning from Maidstone at 1.00.



## BASH THE TRASH

### Borough Green Village Litter Pick

Every first Sunday of the month 11.30 - 12.30 from BG Village Hall.

All equipment supplied, just turn up and go at your own pace.





## What's New @ 1<sup>st</sup> Borough Green Scout Group

These have been busy times at 1<sup>st</sup> Borough Green Scout Group as we settle into our current site at Potters Mede. You may have seen (how could you have missed it?!) that our sign now graces the entrance to the site and we are enjoying being based there at the moment, whilst considering long term options to ensure the future of scouting in Borough Green for the next 25 years.

It is particularly pleasing for me that so much of the activity our young people have enjoyed over the last few weeks has put them at the heart of the wider Borough Green community, actively using their time to make the place where they live better and helping those within the community who need it.

For example, our scouts recently completed a clearance of the wildlife garden at Borough Green Primary School, our Beavers (the youngest members of our group) visited Westbank Care Home to do some craft and Christmas singing with residents and staff and our whole group collected donations of clothing and other essentials for the Maidstone Homeless Care charity.

We have also played a full role in wider community events, joining other organisations for November's Remembrance Day parade and commemorations and running a BBQ at the Christmas Lights Switch On. The latter was crucial for raising much needed funds for the group, some of which will be put towards securing a permanent new home for us.

Alongside all of this, our sections have also been engaged in some novel and fun activities which I know will live long in the memory of our young people. Our Beavers enjoyed a unique evening of reptiles, snakes and creepy crawlies (rather than me!), our Cubs took part in a camp where they enjoyed caving, shelter building and a campfire and our Scouts went BMX riding.

All of this exciting activity is only possible thanks to our volunteers, those who give their time to enable our young people to get the very most out of their time with 1<sup>st</sup> Borough Green Scout Group. I am delighted that our recent successful AGM included us welcoming some new volunteers and if you'd like to join our team then please get in touch with us anytime on [boroughgreenscouts@gmail.com](mailto:boroughgreenscouts@gmail.com).




With best wishes

Matt Paramor

Acting Group Lead Volunteer

## **Borough Green & Wrotham u3a**

Borough Green and Wrotham u3a meetings are held on the second Monday of each month at 2pm in Borough Green Village Hall, with tea, coffee and biscuits. Parking/disabled access available.  [learn, laugh, live](http://www.u3a.org.uk)

The next monthly meeting will be on **Monday 10 February** at 2 pm when we will be holding a Fun Quiz. This event is free for members with a £3 charge for guests. We look forward to seeing you for an afternoon of quizzing, fun and chat.

For further information or to join your local u3a please contact

[info@bgwu3a.org.uk](mailto:info@bgwu3a.org.uk)



## **FOODBANK – HELPING PEOPLE IN FOOD CRISIS**

Church of the Good Shepherd, Borough Green

We are looking for volunteers to join our team on Monday mornings between 8.30am and 11am for picking and packing (aged 18 and over) and/or delivering groceries (aged 18 and over and a car driver). If you are interested, please contact Steve on **07879 491 688** for further details.

**VOLUNTEERS  
NEEDED**

Thanks to your continuing generosity we have been able to support many local families in need. Donations of non-perishable goods may be left in the Church's porch (where there is a list of the items we need most) on any day- the Church is usually open 10am - 5pm.

**Thank you**

For any enquiries regarding our Foodbank please contact Ian Simpson on **07801 135 460** or [foodbank.cogs@gmail.com](mailto:foodbank.cogs@gmail.com)



## **Raise money for charity while you do your shopping?**

**Doing more shopping online? Ever heard of *easyfundraising*? Would you like to donate just by doing your normal shopping?**

We need your help! If you shop online, please could you sign up to *easyfundraising* to support The Church of the Good Shepherd?

It's a really easy way to raise money for us – you just use the *easyfundraising* site to shop online with more than 3,500 well known online stores like Amazon, Argos, John Lewis, ASOS, Booking.com, eBay, Boden, and M&S and when you make a purchase, the retailer sends us a free donation, at no extra cost to you!

We want to raise as much as possible to help with our continuing work in Borough Green, so please visit our *easyfundraising* page at <https://www.easyfundraising.org.uk/causes/cogsbg/> and click 'support us'.

Thank you!

## **DELIVERING THE VOICE**



We are looking for some help to deliver this magazine each month in the village. At the moment there is a particular need to cover :

The Avenue

If you are able to help with this or willing to put your name forward for any future vacancies, please contact Chris Atkins **01732 366615**.

**VOLUNTEERS  
NEEDED**



Are you looking for your own little piece of paradise?

Then look no further!

We offer professional, friendly advice with the assurance that your holiday and money will be financially protected.

Please support local!

Cruise  
Luxury  
Family Fun  
City Breaks  
Tailor Made  
& Much Much More!

**OPENING HOURS**  
MONDAY – FRIDAY 9AM – 5PM  
SATURDAY 9AM – 1PM



Tel: 01732 886968

email: [info@ljtravel.co.uk](mailto:info@ljtravel.co.uk)

[www.ljtravel.co.uk](http://www.ljtravel.co.uk)



**“THE AERIAL MAN”**  
TV AERIAL AND SATELLITE ENGINEER

NO CALL OUT CHARGE  
FREE ESTIMATES  
LOCAL FRIENDLY FAMILY FIRM,  
EST 40 YEARS  
FREE VIEW - FREESAT - BT VISION  
TALKTALK - SKY- FREE CHANNELS  
FULLY INSURED  
DISCOUNTED RATES FOR  
SENIOR CITIZENS

## BESPOKE WINDOW RENOVATIONS



Installation of windows and doors  
Repairs to windows, doors and conservatories

07809 725 984

[Contact@BespokeWindowRenovations.co.uk](mailto:Contact@BespokeWindowRenovations.co.uk)

[www.bespokewindowrenovations.co.uk](http://www.bespokewindowrenovations.co.uk)



**Borough Green**  freesat

**07436 564 897**



NOTHING FROM THE PARISH REGISTERS THIS MONTH



## Thanks

Thank you to the **Borough Green Lights Committee**, their helpers, those who contributed to the Christmas market and performances for the switch on. A successful event and another spectacular display.



**SOUTH EAST**  
**4x4**  
**RESPONSE**

Also thanks to **South East 4x4 Response** and others for the Father Christmas tour of Platt and Borough Green.

## Monday Minis Toddler Time



Play and socialising for pre-school children and their grown ups. **Monday 3 February** 10 to 12 noon in COGS annexe. No charge, just a donation for tea and coffee please.

## Cinema at COGS

**Wednesday 19 February** 2pm in the Church of the Good Shepherd. Please check the Church's noticeboard for this month's presentation. All are welcome so come for an afternoon of free entertainment. Refreshments available during the interval.



## Games, Tea & Chat



On alternative **Mondays** (for dates see diary section) at 2 - 4pm in the annexe to the Church of the Good Shepherd. Come and enjoy board games, tea and a chat. Plenty of room for new folk so, if you are wondering whether it's for you, do get in touch and ask for more information or just turn up at 2.00.

Contact Elaine Almond on 886440 or [etalmond@aol.com](mailto:etalmond@aol.com)



## The Church of the Good Shepherd

COGS website [www.cogsonline.co.uk](http://www.cogsonline.co.uk)

Facebook - [COGSBG](https://www.facebook.com/COGSBG)

Email - [vicar.cogs@gmail.com](mailto:vicar.cogs@gmail.com)

01732 882447

# Events in the Village for the month of February

January

30 COGS Community Event 7.00 to 8.30

February

- 1 **Saturday Open House - COGS - 10.00 to 12.00**  
**COGS - Supper Quiz Night - food served at 7.00**
- 2 **COGS - Holy Communion said - 8.30**  
SJCC - Mass - 9.30  
**COGS - All-Age Communion - 10.00**  
BGBC - Service - 10.30  
Bash the Trash - BGVH - 11.30 to 12.30
- 3 **Toddler Time - COGS Annexe - 10.00 to 12.00**  
**Games, Tea and Chat - COGS Annexe - 2.00 to 4.00**  
BG Parish Council - Bowls Club - 7.30
- 4 BG Library - Scrabble Club - 2.15 to 4.15
- 6 SJCC - 10.00 Mass followed by Adoration  
BG Lunch Club - BGVH - 10.00 to 1.00  
BG Library - Coffee & Chat - 10.15 to 12.15
- 7 BG Lunch Club - BGVH - 10.00 to 1.00  
BG Library - Baby Bounce and Rhyme Time - 10.15 to 10.45
- 8 **Saturday Open House - COGS - 10.00 to 12.00**
- 9 SJCC - Mass - 9.30  
**COGS - Holy Communion and Children's Church - 10.00**  
BGBC - Service - 10.30
- 10 BGVH - u3a meeting - 2.00
- 11 BG Library - Scrabble Club - 2.15 to 4.15
- 12 Sticky Fingers - BGBC - 10.00 to 11.15
- 13 SJCC - 10.00 Mass followed by Adoration  
BG Lunch Club - BGVH - 10.00 to 1.00  
BG Library - Coffee & Chat - 10.15 to 12.15
- 14 BG Lunch Club - BGVH - 10.00 to 1.00  
BG Library - Baby Bounce and Rhyme Time - 10.15 to 10.45  
Friday 2 Book Club - BG Library - 2.00  
Wrotham Historical Society - 8.00 - Wrotham Village Hall
- 15 **Saturday Open House - COGS - 10.00 to 12.00**
- 16 **COGS - Breakfast Church - 9.00**  
SJCC - Mass - 9.30  
**COGS - Holy Communion - 10.30**  
BGBC - Service - 10.30
- 17 **Games, Tea and Chat - COGS Annexe - 2.00 to 4.00**
- 18 BG Library - Scrabble Club - 2.15 to 4.15
- 19 **COGS - Film Afternoon - 2.00**
- 20 SJCC - 10.00 Mass followed by Adoration  
BG Lunch Club - BGVH - 10.00 to 1.00  
BG Library - Coffee & Chat - 10.15 to 12.15





- 21 BG Lunch Club - BGVH - 10.00 to 1.00  
BG Library - Baby Bounce and Rhyme Time - 10.15 to 10.45
- 22 **Saturday Open House - COGS - 10.00 to 12.00**  
SJCC - Quiz Night - 7.30
- 23 SJCC - Mass - 9.30  
**COGS - Holy Communion and Children's Church - 10.00**  
BGBC - Service - 10.30  
**COGS - Tea-Time Church - 4.30**
- 25 BG Library - Scrabble Club - 2.15 to 4.15  
Ightham & District Gardeners' Club - Ightham Village Hall - 7.15
- 26 Sticky Fingers - BGBC - 10.00 to 11.15
- 27 SJCC - 10.00 Mass followed by Adoration  
BG Lunch Club - BGVH - 10.00 to 1.00  
BG Library - Coffee & Chat - 10.15 to 12.15
- 28 BG Lunch Club - BGVH - 10.00 to 1.00  
BG Library - Baby Bounce and Rhyme Time - 10.15 to 10.45



### Abbreviations

COGS	Church of the Good Shepherd	BGBC	Borough Green Baptist Church
SJCC	St Joseph's Catholic Church	BGVH	Borough Green Village Hall



## QUIZ NIGHT

**Saturday 22 February - 7.30 pm start**

St Joseph's Catholic Church, Western Road, Borough Green.

Maximum of 6 persons per table. Either make up your own team or join with others on the night.

**Tickets £10** (to include a Ploughman's Supper)  
available from

**Jenny 07591 301 186**

**Margaret 01732 885 295**

Bring own drinks, glasses and nibbles.

**Net profit to St Joseph's Church Funds**



### IGHTHAM & DISTRICT GARDENERS' CLUB

INVITES YOU TO OUR FIRST MEETING FOR 2025  
WITH A QUIZ NIGHT & SOCIAL GET TOGETHER

WHY NOT COME ALONG AND MEET THE CLUB MEMBERS AND FIND OUT ABOUT THE CLUB

**TUESDAY 25 FEBRUARY IGHTHAM VILLAGE HALL 7.15pm**

Visitors very welcome

For further information contact

Pippa Coulthard - 01732 883041 or Dee Samways - 07799 002129

**WESTBANK**   
by Aurem Care



# Join Our Caring Team

## Day Care & Night Senior Positions Available



**Full & Part Time  
Positions Available**

Call us and apply today on **01732 780066**  
Discover how you can make a meaningful  
difference in the lives of our residents.



**Email: [manager.westbank@auem-care.com](mailto:manager.westbank@auem-care.com)**

64 Sevenoaks Road, Borough Green, TN15 8AP

**[www.auem-care.com](http://www.auem-care.com)**



## Breathing New Life into Our Village Hall

Dear Village Residents,

We are excited to announce our plans to renovate, update and improve our beloved village hall - making it an even more welcoming and functional space for our community.

### **What are we working on to improve the Hall?**

Our village hall has served us well for many years, hosting every imaginable event from plays, elections, clubs, birthday parties etc all combined and supported by our regular groups of Luncheon Club, Slimming World, Dance for Children and Adults, Art Clubs and Pilates to name a few. However, we as a committee greatly recognise the need to modernise the facility while still preserving its historic charm. Some of our forthcoming planned improvements include:

#### **Upgrading Energy Efficiency**

The installation of modern new main doors and improved insulation will significantly reduce heating costs. We are still confirming but we believe we have managed to reduce our heating bill this year by over £2,500 and are working to continue to make the hall more comfortable year-round by utilising smart functionality.

#### **Working on Enhancements**

We're committed to making the hall accessible to all residents and this includes improving wheelchair access at the main entrance by widening doorways. We are also looking at improving our bathroom facilities and are in process of adding of new hand dryers and working to be ahead of legal requirements by providing items such as male incontinence bins and enhanced baby changing facilities. This month will see the committee carry out a 'top to toe' review of the whole building and creating a project plan for further enhancements which includes decoration of the whole building (ideas welcomed!). We are also intending to create a 'pop up office' for small ad-hoc meetings or small group use as a workspace.

#### **Updating Technology**

Installation of new Wi-Fi infrastructure and a modern audio-visual system will support a wider range of activities and events that are required by the community. This includes an enhanced projector system and improved acoustics for presentations and entertainment. We also plan to have an electronic display in reception promoting clubs and events.

#### **Funding and Support**

The hall is a charity and support for improvements and maintenance during 2025 will be made possible through a combination of:

- Local council grant funding
- Community fundraising efforts
- Hiring, charges and donations
- Village Hall reserve fund £60,000
- Working with local professionals for project work

*(Continued on page21)*



PRICE MATCH PROMISE



Block Paving • Resin Drives • Tarmacadam • Patios • Fencing

Please Call For Free Estimates & Friendly Advice



Driveways by Design

Office: 01322 518 056

Freephone: 0800 747 1580

Direct: 07554 092 140

www.firmacontractorsltd.co.uk

The Old Barn, Off Wood Street, Swanley Village, Kent BR8 7PA



Shires Heating Services

07921 197780

@ ben@shiresheatingservices.com

- Boiler servicing
- Boiler breakdowns and repairs
- New boiler installations and system upgrades
- Power flushing / system cleaning
- Aga and Rayburn servicing and repairs
- Unvented cylinder service and repairs
- LPG, oil and leisure park homes / caravans
- Landlords gas safety records
- Cooker and gas fire servicing
- Radiator repairs and replacements



www.shiresheatingservices.com



### **Giving Something Back**

This past year we have been able to support various local projects by offering the hall and its amenities to various charitable groups and community activities (free of charge) as part of our endeavours to promote our own community social responsibility stance and in the year ahead we will be looking to promote that further and widen our 'paying it back' strategy.

### **Getting Involved**

Our AGM will be upon us again in the second quarter of 2025 and, with a new Village Hall Improvement Committee being formed, we'd greatly welcome contributions and suggestions, ideas, time and expertise. Whether you're interested in helping with design decisions, organising fundraising events or providing practical assistance we welcome any support.

### **Keeping you Informed**

We intend to provide monthly progress updates locally in the Voice, on the village notice board and on website and social media groups. Together, we feel we are working to create a better and more welcoming space for our community to gather, celebrate and grow.

Kind regards,  
The Village Hall Committee

# **LEARN TO LINE DANCE**

**No experience needed.**

Fun friendly class with professional instructor of more than 20 years.



**Starts Thursday 6 February 2025**

**1pm - 2pm**

**Platt Memorial Hall**

**Platinum Way**

**TN15 8FH**

**£7, membership discount available.**



**MESSAGE, EMAIL OR  
CALL TO REGISTER**

Gary 07961090233

candglinedance@outlook.com



*Painter and Decorator*

*33 years experience*

*Interior & Exterior*

*Free Estimates*

*Friendly and reliable*

*Call Steve 07811 360269  
www.jarvisdecorating.co.uk*



Extensions - Loft conversions  
Internal & External Alterations  
Full Planning &  
Structural Engineers Service  
References Always Available

**www.honeycombconstruction.co.uk**  
**(01732) 883443**  
**07989 509 630**

## **Baby Bounce & Rhyme Time**



**Borough Green Library**  
**Fridays**  
**10.15 - 10.45**

*No booking required*



“Help at an emotional time”

Borough Green,  
Wrotham, St Mary's Platt, Ightham  
& surrounding villages  
**01732 780600**

43 Western Road, TN15 8AL  
boroughgreen@welhamjones.co.uk

- ◆ Traditional & Contemporary funerals
- ◆ Eco-friendly funerals & woodland burials
- ◆ Private chapel of rest ◆ Home arrangements
- ◆ Memorials & keepsakes



[www.welhamjones.co.uk](http://www.welhamjones.co.uk)



## Tom Tugendhat MP's Column

Many parents are concerned about the additional tax the new Government are asking Private Schools to pay. They are right, this will impact their children's future. This tax won't just hurt those in Private Schools, it will increase class sizes and put pressure on all schools in our community.

It is estimated that over 37,000 children may now need to have a place at their local state school, putting significant pressure on our grammar schools and secondary schools in particular. Our local schools provide wonderful assets including their facilities to the community. This is certainly the case for Tonbridge School, who are an employer in the town. Jobs are under threat. Our area will be hit hard by this change.

The education system in Kent is one that demonstrates a range of secondary schools, working effectively alongside one another, catering for many different needs, can generate positive results for everyone. In our community, all schools provide that bridge to take young people to the next stage of their lives. That is why education is one of the biggest pull factors to Kent. And that's not just good for schools, it helps support local businesses, allows local communities to develop and connect, and boosts opportunities for all.

I am keen to get thoughts from as many people as possible on this subject. If you are impacted, or concerned about the implications, please do visit [www.tomtugendhat.org/schoolstax](http://www.tomtugendhat.org/schoolstax) where I am asking for views through my website. I am keen to hear from you.

[tom.tugendhat.mp@parliament.uk](mailto:tom.tugendhat.mp@parliament.uk)

### TMBC updates Community Grant Scheme

Grants of up to £2,500 are available to local community groups and charities to help towards supporting borough wide community initiatives in 2025/26. Applications will be considered for core funding to support the ongoing work of voluntary and community groups but higher priority will be given to those applications seeking funding for a specific project or purchase. For further information go to [www.tmbc.gov.uk/anniversary-grant](http://www.tmbc.gov.uk/anniversary-grant). The closing date for applications is **2 March**.



[www.tmbc.gov.uk](http://www.tmbc.gov.uk)

### Need help to get online?

Would you or someone you know benefit from a free laptop and training in how to use it? Funding to support digital inclusion is still available to residents in Tonbridge and Malling.

So far, in partnership with Kent County Council, we've given free laptops and training to over 160 people who previously lacked online access.

Until the **end of March**, you can apply as an individual or be referred into the scheme by someone else. If successful, we will gift a new device with the capability to do everything you need online, from writing emails to streaming your favourite movies and TV shows - and there's no requirement to return it.

For more information, including eligibility criteria, go to

[www.digitalkent.uk/information/projects/externally-funded/tmbc](http://www.digitalkent.uk/information/projects/externally-funded/tmbc)  
or telephone 03000 410 950.



Aaron Penna Victoria Penna  
Chartered Physiotherapists

Highly Experienced and Skilled Therapists

All Musculoskeletal, Rehabilitation and  
Respiratory problems catered for

Clinic appointments available

Home Physiotherapy Service

Check out our 5\* rating on google

Call today for an appointment or email  
for further information

01732 823189

admin@pwphysio.co.uk  
www.pwphysio.co.uk



**DB Home & Garden Maintenance**

*Carpentry † Painting † Decorating  
Wooden Conservatory & Window Refurbs  
Flooring † General Repairs*

*Hedge & Grass Cutting  
Sheds † Summer Houses † Fencing  
Decking † Patios*

*No job too small! Fully Insured!*

Tel:01622 202475 - Mob: 07545 086827

Email: dbhomeandgarden@gmail.com

JANUARY & FEBRUARY  
**SPECIAL  
OFFER!**



JOIN US IN  
JAN & FEB 2025  
**PAY NOTHING FOR  
YOUR 2ND MONTH  
+ NO JOINING FEES!**  
PLUS GET 10 GUEST  
PASSES!

 **Spirit**  
HEALTH CLUB

Call 01732 756 900 or email spiritmgr@himairstone.com





**28 - 30 March Borough Green Village Hall**  
 Tickets Adults, £14, and children 16 or under, £10.  
 Further details in next month's magazine or  
 see Borograds Facebook page



### Wrotham Historical Society

**14 February**

Chaucer and the Canterbury Tales -  
 a talk by James Dickinson

8.00pm Wrotham Village Hall All visitors welcome - £5



### Borough Green Baptist Church

For ages 5 and under

10am - 11.15am

Alternative Wednesdays see diary section  
 £2 per child to include play, refreshments  
 and take home craft

Regular updates on [Facebook.com/](https://www.facebook.com/StickyFingersCrafts)  
 StickyFingersCrafts



### Borough Green Ladies Football Club

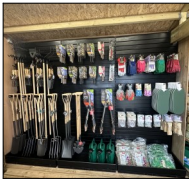
Borough Green Ladies have won a league game 3-1 and in cup competitions have won 3-1 and 3-0 and lost 1-4. Home games at Wrotham School are scheduled for 2 and 20 February.



# Greenacres

Borough Green Road, Ightham, TN15 9JA  
01732 884726

## Get ready for Spring!



- Compost, pots, fertilisers, bird feed, logs, coal and charcoal
- Seed potatoes and onion sets



- Seeds and early Spring bulbs in pots
- Gardening tools and planting accessories

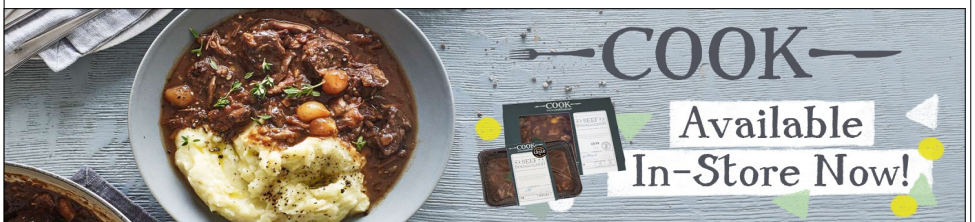


- Local farm produce, eggs, cheeses, biscuits and ice cream
- Treat yourself to a **Rombouts** coffee/hot chocolate available in the farm shop

Open every day:

9am - 5pm

[sales@greenacresgardencentre.co.uk](mailto:sales@greenacresgardencentre.co.uk)



# Contacting Kent Police

## Report a crime:



To report a non urgent crime visit  
[www.kent.police.uk/report](http://www.kent.police.uk/report)



Talk to us on LiveChat – available 24/7:  
[www.kent.police.uk/contact](http://www.kent.police.uk/contact)



In an emergency, if crime is in progress or life is in danger,  
call **999**



If you have a hearing or speech impairment, use our textphone  
service 18000. Or text us on 999 if you've pre-registered with the  
emergency SMS service.



For news and advice visit [www.kent.police.uk](http://www.kent.police.uk)

## News, information and advice:



Find your answer online. Browse the national Ask the Police  
question finder [www.askthe.police.uk](http://www.askthe.police.uk)



Email your local policing team.  
Visit [www.kent.police.uk/yourarea](http://www.kent.police.uk/yourarea)



Follow us on Twitter [@kent\\_police](https://twitter.com/kent_police) or find your local  
account at [www.kent.police.uk/yourarea](http://www.kent.police.uk/yourarea)



Find us on **Facebook**



Follow us on Instagram [@kentpoliceuk](https://www.instagram.com/kentpoliceuk)



# SMALL NOTICES



Slimming World  
Group on  
Wednesdays  
8.00am, 9.30am, 5.30pm and 7pm  
at Borough Green Village Hall.

Phone Anita on **07725 484 361**



## Clock Kent



Clock & Watch repairs,  
restoration & servicing  
Collection & delivery available.

Call Paul on 01732 884363 / 07831 884789  
or email: [paul@clockkent.com](mailto:paul@clockkent.com)  
[www.clockkent.com](http://www.clockkent.com)



BROCK COTTAGE  
HOME

Hand selecting vintage homewares &  
furniture for home makers.  
[www.brockcottagehome.com](http://www.brockcottagehome.com)  
Follow us: @brockcottagehome

## Phone Sockets/Broadband

25 YRS BT ENGINEER - FULLY INSURED

- New Phone & Broadband sockets / extensions
- Fault finding repairs / Improve broadband speeds
- Cat 5 wiring
- Internal/external re-routing and tidying of cables prior to double glazing

Tel: G. NUGENT **07845 705900**  
[www.fixyourline.co.uk](http://www.fixyourline.co.uk)



## J Skilton

### 4 Rubbish Cleared Service

*Husband and wife team*

Household, garden, etc.

Better than a skip, we load it!

All areas covered.

Environment and KCC registered.

Call Jayne **07885 944876** anytime.



**PROTEGO**  
PEST  
CONTROL

**Matt Rose**

Mobile: 07897314478

Email: [info@protegopestcontrol.co.uk](mailto:info@protegopestcontrol.co.uk)

Website: [www.protegopestcontrol.co.uk](http://www.protegopestcontrol.co.uk)



## Hall bookings

### Parish Hall - Quarry Hill

Alan Williams 07436 115 425

### Village Hall

[www.boroughgreenvillagehall.co.uk](http://www.boroughgreenvillagehall.co.uk)

01732 646040

### Potters Mede

Bernard Galopin 07568 536 405

## Defibrillator Locations

a) 24 hours a day

The Village Hall

Potters Mede

The Recreation Ground

The Fire Station

b) When premises are open

The Medical Centre

BG Primary School

Fourways Dentists



## **BOROUGH GREEN LIBRARY**

The library is open – with a wide range of services, from free access to books, computers, WiFi and information on the hire of music, audio books and films.

Opening hours are

10 - 1 and 2 - 5 on Monday, Tuesday, Thursday and Friday  
and 9 - 1 on Saturday.

Events for which no booking is required see diary section


Ancestry - Monday 10.15 - 12.15 need to book an appointment

For more advice please call the library on 03000 413 131 or email [boroughgreenlibrary@kent.gov.uk](mailto:boroughgreenlibrary@kent.gov.uk) where staff will be able to help.

**We look forward to seeing you.**



**DIGITAL KENT** is working to improve digital inclusion and capabilities. The next events are on **Fridays 7 February** and **7 March** at 11.00 - 1.00. To book a session and find out more please visit [www.digitalkent.uk](http://www.digitalkent.uk) or call 0300 0410950.

The next clinic for sound support for deaf and hard of hearing people is on **Friday 28 February** 2.30 to 3.30.  **Hi Kent**  
No appointment needed. Drop in and wait your turn.

## **Digital Hubs**



Our Digital Hubs are delivered by Kent County Council's Digital Inclusion & Capabilities service (Digital Kent), we are delivering over 40 Local Digital Hubs across the county to enable residents to access digital support to become, and/or remain, digitally included and become more digitally engaged. These Hubs are generally every month for around two hours, with 30-minute slots bookable at each location.

Whether you're a complete beginner, have a new device you don't know how to set up, or are stumped by a new app and just want someone to help you through it, our Digital Champion volunteers are there to help you through any digital dilemmas. We can help with a one off problem like not knowing how to get your favourite pictures off your phone, or can help with longer term support if you generally feel the digital age has moved ahead without you. We can help on topics such as online shopping, scam awareness, using your NHS App, setting up emails, keeping in digital contact with friends and family and searching for jobs, hobbies or community online.

See above regarding sessions at Borough Green Library.

## Tonbridge and Malling Ramblers

You don't have to be a Ramblers member to try up to three 'taster' walks with us. If you're new to our walks, please contact the walk leader to check that their walk will suit you. For details of these and other upcoming walks and walk leaders see our Facebook page at [www.facebook.com/groups/tonbridgeandmallingeramblers](https://www.facebook.com/groups/tonbridgeandmallingeramblers) or visit [www.tonbridgeandmallingeramblers.org.uk](http://www.tonbridgeandmallingeramblers.org.uk).



February	Route	Distance in miles
Thursday 6th	Circular walk through Knole Park from Godden Green. Moderate difficulty.	5.5
Sunday 9th	Undulating circular walk around Plaxtol and Gover Hill. Moderate difficulty.	5.5
Thursday 13th	Circular walk around Brenchley with a mix of footpaths and quiet lanes. Moderate difficulty; some stiles.	5.8
Sunday 16th	Circular walk from Offham to Ryarsh and West Malling, returning through Manor Park Country Park and past St Leonard's Tower. Mix of woodland, footpaths and some road walking. Three stiles; moderate difficulty.	5.7
Thursday 20th	From Addington Village we follow the Wealdway past the Coldrum Stones and an ascent to the Pilgrims Way. Some quiet road walking before heading down to Trosley church. Return across fields; moderate difficulty; no stiles.	5.5
Sunday 23rd	Plaxtol circular walk - a gently rising climb from Plaxtol through Yopps Green with views over the Bourne valley before returning via Dunk's Green. Moderate difficulty.	5.5
Thursday 27th	Barming to East Malling circular walk through Oakham Woods and the East Malling Horticultural Research Station and on to the village of East Malling. Return through fields and ancient woodland taking in some fine views of the Kent countryside. Mainly flat; moderate difficulty.	6
Walks usually start mid-morning. There's a short half-way break (bring refreshments) and we usually finish near a pub. Most walks are dog-friendly (see website).		



### Heart of Kent Hospice - Maidstone Road Run

Join us on **Sunday 2 March** between 9 -12 at Cornwallis Academy, Hubbard's Lane, Loose, ME17 4HX. There are options for 10k, 5k and 1k family run for younger children.

When buying a fundraising ticket, you are pledging to raise funds for Heart of Kent Hospice, which will enable us to continue supporting those at the end of their lives and their families.

For more information go to [www.hokh.org/event/maidstone-road-run-2025/](http://www.hokh.org/event/maidstone-road-run-2025/).

## PLD GENERAL BUILDER

PETER 07769 736646  
Borough Green 01732 382530  
(answer machine)

Extensions  
Refurbishments  
Brickwork  
Driveways  
Fascia & Soffits  
GRP Flat Roofing  
Conversions  
Plastering  
Patio  
Kitchens / Bathrooms  
Fencing  
Painting & Decorating

AND ALL GENERAL BUILDING

## LOCAL LOCKSMITH

**NO CALL-OUT FEE! 24HR SERVICES**

- ✓ uPVC / DOUBLE GLAZING / PATIO DOORS & WINDOW LOCK REPAIRS.
- ✓ JUST MOVED IN ? WHO HAS A KEY ? COMPLETE LOCK CHANGE SERVICE.
- ✓ LOCK-OUTS / LOST KEYS / BROKEN LOCKS.
- ✓ EMERGENCY LOCK & DOOR OPENING.
- ✓ DOMESTIC & COMMERCIAL WORK.
- ✓ ALL TYPES OF LOCKS / HARDWARE SUPPLIED & FITTED.

Call Paul on:

# 07506 451405

graves972@btinternet.com

**PaulGraves**  
Locksmith

**Checkatrade**  
Ave Score 9.95 | Over 1200 Reviews  
Checkatrade ID 311650

## FOURWAYS ENGINEERING



EST. 1973

**Specialists in all Classic and Sports Car Restoration  
and all Vehicles General Servicing**

**Unit 12 Platt Industrial Estate, Maidstone Road,**

**St Marys Platt, Sevenoaks, Kent, TN15 8JL**

**Telephone: 01732 884 288**

**Email: info@fourwaysgroup.co.uk**

Do you struggle out of bed?  
Is walking difficult or painful?  
Have you an injury that just  
isn't getting better?

Contact Carole Simpson  
Experienced and specialist  
physiotherapist

**01732 780909**

**Stay active and start  
enjoying Life**

[Carole@boroughgreenphysio.co.uk](mailto:Carole@boroughgreenphysio.co.uk)  
[www.boroughgreenphysio.co.uk](http://www.boroughgreenphysio.co.uk)



The Studio at Windy Nob, Staleys  
Road, Borough Green TN15 8RL



Residential Sales, Lettings & Valuations

**Independent Village  
Estate Agent**  
**Dedicated to helping you**

Our fee is only 1% + VAT

Call now for a free valuation

**01732 884422**

[enquiries@hillier-reynolds.co.uk](mailto:enquiries@hillier-reynolds.co.uk)

3 Sevenoaks Road, Borough Green,  
Kent, TN15 8AX



**01732 885585**

[kings-estate-agents.co.uk](http://kings-estate-agents.co.uk)



Sevenoaks Road, Ightham,  
TN15 9AD

For All Auto Queries

01732 780591      07747535657

All makes and models  
MoTs

Free courtesy car  
Free local collection and delivery

Brakes      Servicing  
Repairs      No. Plates

All mechanical and diagnostic  
work carried out by  
qualified automobile engineers